

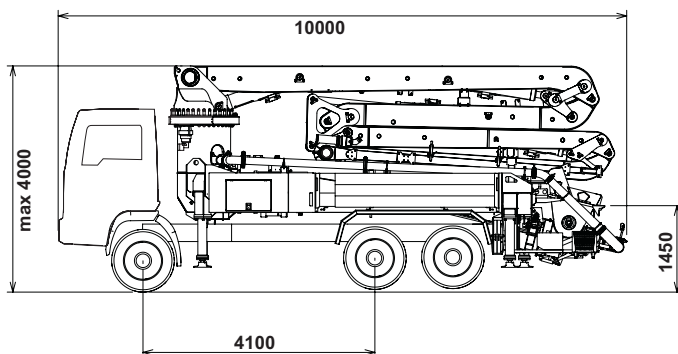
## K31 L

### TRUCK-MOUNTED CONCRETE BOOM PUMP

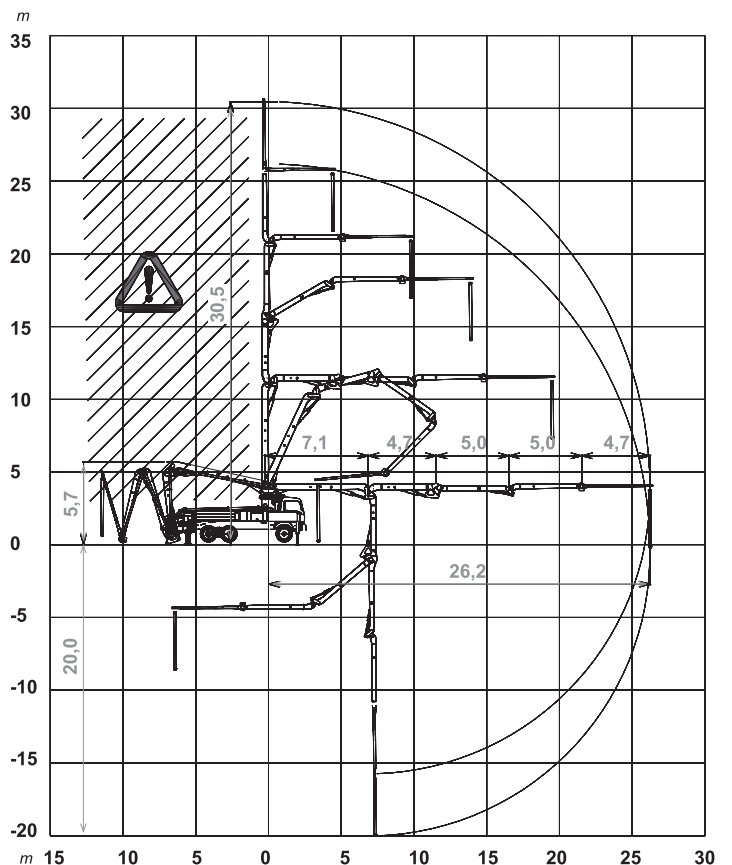
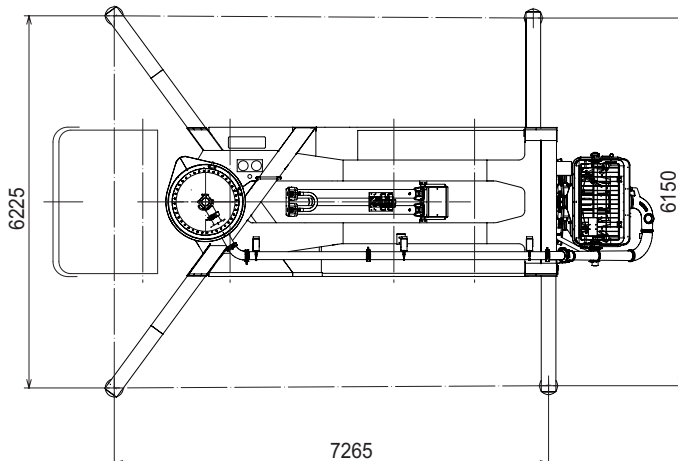
Placing boom	B5Z 31/27
Pumping unit	PA 1506/909 F8 HPG1408 IF9
Driven by	PTO
Chassis	3 - 4 axles



### Dimensions



Dimensions varying according to truck assembly



# K31 L

## Main features

- Assembling on standard 3 or 4 axles chassis
- Self-supporting frame, torsion free, FEM designed
- Placing boom B5Z 31/27, 5 sections, 125 mm pipeline diameter, "Z" folding system and continuous rotation on 5th section
- Fully hydraulic outrigger controls on both sides of the truck
- Front outriggers "X" style for a quick set-up and easy pump placement in narrow areas
- Proportional boom control
- The "BFC" Best-Flex Cifa supporting system allowing just one man to change delivery pipeline easily, quickly and safely
- Concrete flow rate regulator
- Safety device on opening inspection hatch
- HPG-IF pumping unit with closed circuit and reversal flow: superb performances, high pressures and output, high reliability and easy and reduced maintenance; 9 inches S valve

### alternatively:

F8 pumping system with open circuit: smooth, continuous and easy pumping, combined with high reliability

## Standard equipment

- 2 Proportional radio control with two boom movement speed, synthesiser for automatic frequency search, 8 position joy stick and concrete flow rate regulator. 20 mt cable
- Remote controlled electric vibrator placed on the concrete hopper grid
- Centralized lubrication system for pumping unit
- Additional manual lubrication system for pumping unit
- Hard plastic outrigger support plates with relative housing
- Rear light on hopper
- Level readers for stabilization control
- Accessories for cleaning and pipes washing
- Double thickness concrete pipes, in high resistant steel - CIFA Long Life Pipes
- Aluminium hopper covering

## Optionals

- High pressure water pump for cleaning
- Air compressor for pipeline cleaning
- Pumping unit Electronic version: HPG 1408 IF9 EPC
- Centralized lubrication system for placing boom
- Air pipeline for placing boom
- Separated emergency engine kit for independent control of the hopper mixer, concrete pumping unit, boom and water pump
- Continuous boom rotation kit

## TRUCK-MOUNTED CONCRETE BOOM PUMP

<b>Placing boom</b>	B5Z 31/27
<b>Pumping unit</b>	PA 1506/909 F8 HPG1408 IF9
<b>Driven by</b>	PTO
<b>Chassis</b>	3 - 4 axles

## Pumping unit technical data

Model		PA 1506/909 F8	HPG 1408 IF9
Max. theoretical output	<i>m<sup>3</sup>/h</i>	150/90	140
Max. pressure on concrete	<i>bar</i>	53/95	80
Max. numbers of cycles per min.	<i>nr.</i>	30/17	28
Conc. cylinders (diam. x stroke)	<i>mm</i>	230x2000	230x2000
Concrete hopper capacity	<i>l</i>	550	600
Hydraulic circuit		open	closed

## Placing boom technical data

Model		B5Z 31/27
Pipeline diameter	<i>mm</i>	125
Max. vertical reach	<i>m</i>	30,5
Max. horizontal distance	<i>m</i>	26,2
Min. unfolding height	<i>m</i>	5,7
Section numbers		5
1st section opening angle		90°
2nd section opening angle		180°
3rd section opening angle		240°
4th section opening angle		180°
5th section opening angle		360°
Rotating angle		370°
End hose length	<i>m</i>	4

Technical data and characteristics subject to modifications without notice