

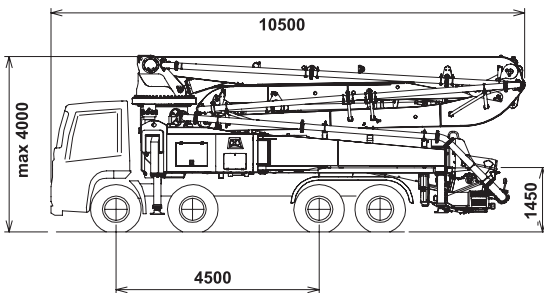
## K41L XRZ

### TRUCK-MOUNTED CONCRETE BOOM PUMP

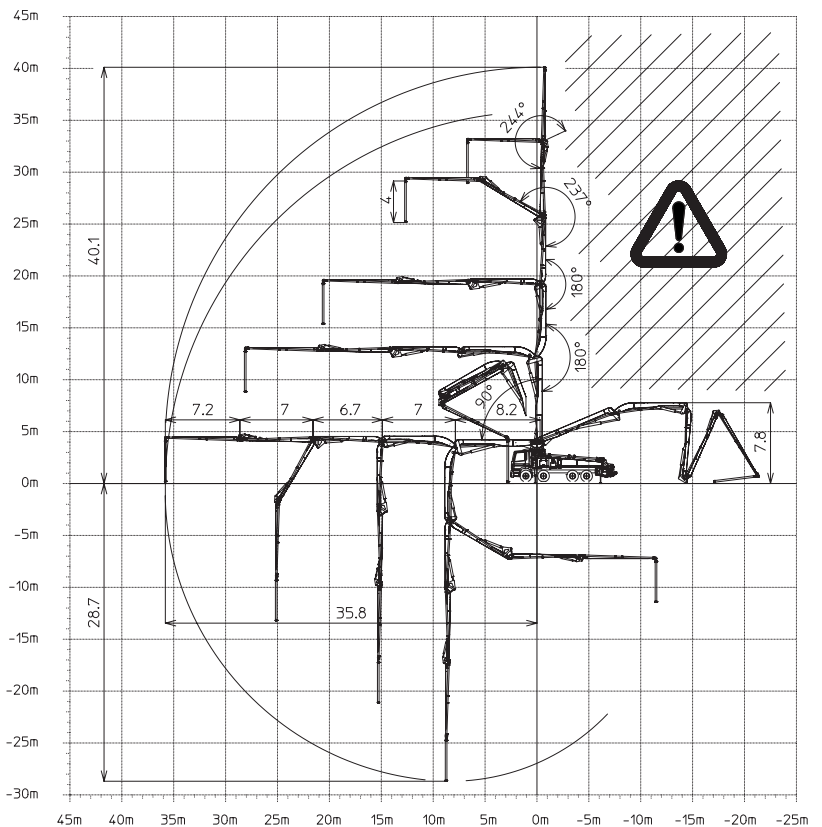
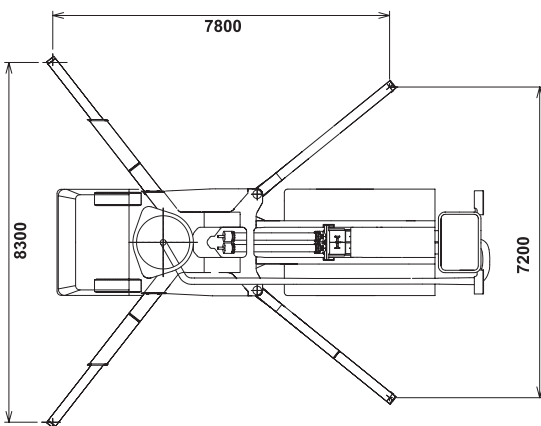
Placing boom	B5RZ 41/36
Pumping unit	HPG 1808/1113 IF9
	HPG 1408 IF9 PA 1506/909 F8
Driven by	PTO
Chassis	4 assi



#### Dimensions



Dimensions varying according to truck assembly



# K41L XRZ

## Main features

- Advantageous assembling on standard 4 axles chassis
  - Self-supporting frame, torsion free, FEM designed
  - Placing boom B5RZ 41/36, 5 sections, pipeline diameter 125 mm, "RZ" folding system
  - Fully hydraulic outrigger controls on both sides of the truck
  - Front "X" style diagonal outriggers with double telescopic opening and swing-out rear outriggers for a quick and easy set-up also in narrow areas
  - "Load Sensing" proportional boom control
  - "BFC" Best-Flex Cifa supporting system allowing just one man to change delivery pipeline easily, quickly and safe
  - Concrete flow rate regulator
  - Safety device on opening inspection hatch
  - HPG-IF pumping unit with closed circuit and reversal flow: superb performances, high pressures and output, high reliability and easy and reduced maintenance; 9 inches S valve *alternatively*.
- F8 pumping system with open circuit: smooth, continuous and easy pumping, combined with high reliability

## Standard equipment

- 2 Proportional radio control with two boom movement speed, synthesizer for automatic frequency search, 8 position joy stick and concrete flow rate regulator. 20 mt cable
- Emergency control pad for pumping unit HPG 1808/1113 IF
- Remote controlled electric vibrator placed on the concrete hopper grid
- Centralized lubrication system for pumping unit
- Automatic oil lubrication system for pumping pistons on HPG 1808/1113IF
- Additional manual lubrication system for pumping unit
- Hard plastic outrigger support plates with relative housing
- Rear light on hopper
- Level readers for stabilization control
- Accessories for cleaning and pipes washing
- Double thickness concrete pipes, in high resistant steel - CIFA Long Life Pipes
- Aluminium hopper covering

## Optional

- High pressure water pump
- Air compressor for pipeline cleaning
- Centralized lubrication system for placing boom
- Air pipeline for placing boom
- Separated emergency engine kit for independent control of the hopper mixer, concrete pumping unit, boom and water pump
- Pumping unit Electronic version: HPG 1408 IF9 EPC

## TRUCK-MOUNTED CONCRETE BOOM PUMP

<b>Placing boom</b>	B5RZ 41/36
<b>Pumping unit</b>	HPG 1808/1113 IF9 HPG 1408 IF9 PA 1506/909 F8
<b>Driven by</b>	PTO
<b>Chassis</b>	4 assi

## Pumping unit technical data

Model		HPG 1808/1113 IF9	HPG 1408 IF9	PA 1506/909 F8
Max. theoretical output	<i>m³/h</i>	179/105	140	150/90
Max. pressure on concrete	<i>bar</i>	76/130	80	53/95
Max. numbers of cycles per min.	<i>nr.</i>	36/21	28	30/17
Conc. cylinders (diam. x stroke)	<i>mm</i>	230x2000	230x2000	230x2000
Concrete hopper capacity	<i>l</i>	650	600	550
Hydraulic circuit		closed	closed	open

## Placing boom technical data

Model		B5RZ 41/36
Pipeline diameter	<i>mm</i>	125
Max. vertical reach	<i>m</i>	40,1
Max. horizontal distance (from center of slewing axis)	<i>m</i>	35,8
Min. unfolding height	<i>m</i>	7,8
Section numbers		5
1st section opening angle		90°
2nd section opening angle		180°
3rd section opening angle		180°
4th section opening angle		237°
5th section opening angle		244°
Rotating angle		370°
End hose length	<i>m</i>	4

Technical data and characteristics subject to modifications without notice