

K52L XRZ

TRUCK-MOUNTED CONCRETE BOOM PUMP

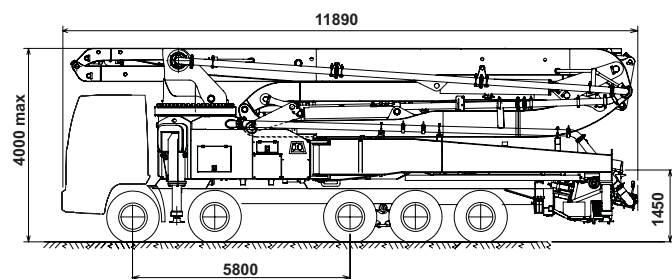
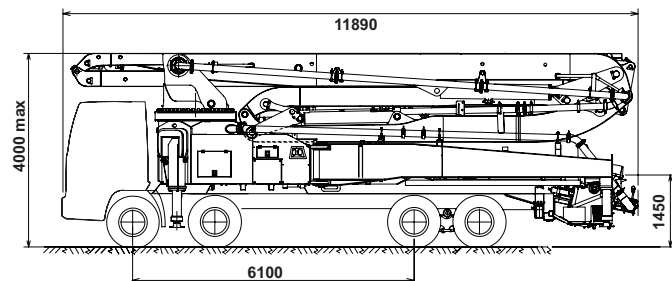
Placing boom Pumping unit

B5RZ 52/48
HPG 1808/1113 IF9
PA1506/909F8
PTO
4-5 axles

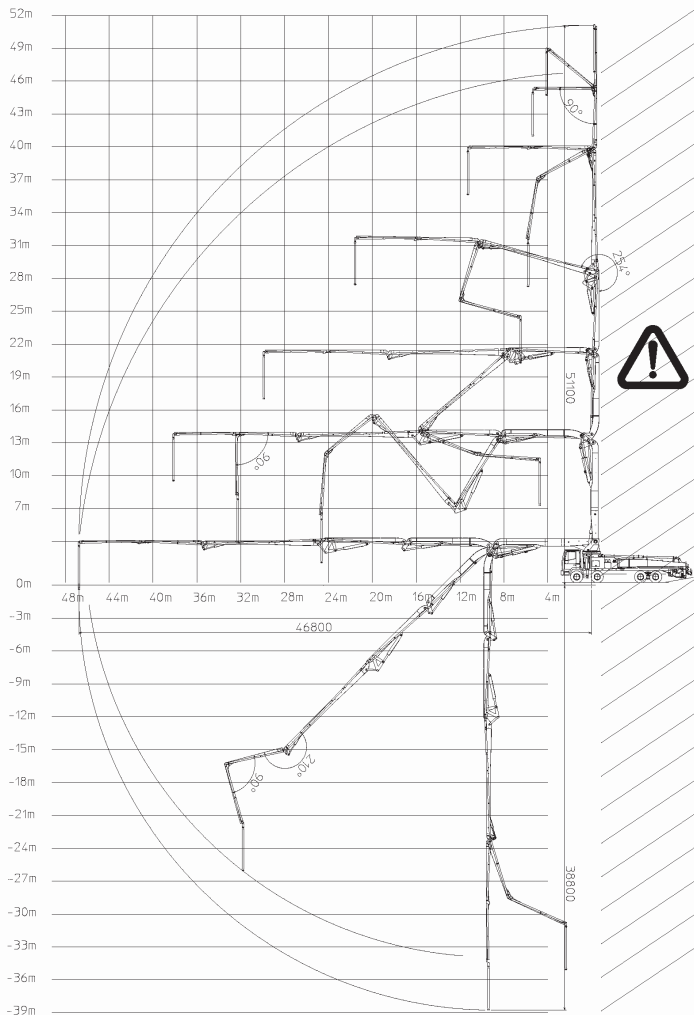
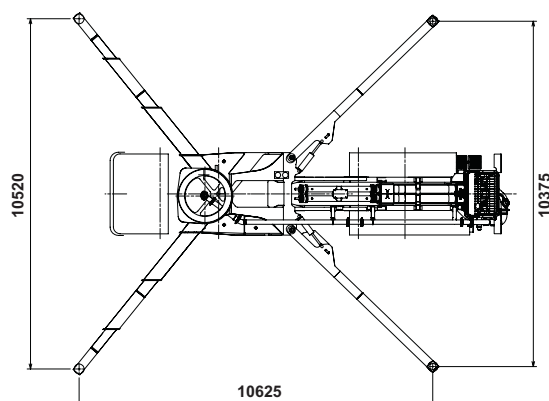
Driven by Chassis



Dimensions



Dimensions varying according to truck assembly



K52L XRZ

Main features

- Advantageous assembly on standard 4 and 5 axle chassis, max. length <12m
 - Self-supporting frame, torsion free, FEM designed
 - Placing boom B5RZ 52/48, 6 sections, pipeline diameter 125 mm, "RZ" folding system.
 - Fully hydraulic outrigger controls on both sides of the truck
 - Front "X style" diagonal outriggers with sequence controlled triple patented telescopic opening and swing-out rear outriggers for a quick and easy set-up
 - "Load Sensing" proportional boom control
 - The "BFC" Best-Flex Cifa supporting system allowing just one man to change delivery pipeline easily, quickly and safely.
 - Concrete flow rate regulator
 - HPG-IF pumping unit with closed circuit and reversal flow: superb performances, high pressures and output, high reliability and easy and reduced maintenance; 9 inches S valve
- alternatively**
- "F8" pumping unit with open circuit: smooth, continuous and easy pumping, combined with high reliability
- Safety device on opening inspection hatch

Standard equipment

- 2 Proportional radio control with two boom movement speed, synthesiser for automatic frequency search, 8 position joy stick and concrete flow rate regulator. 20 mt cable
- Electronic stability control and data logger **K-TRONIC®**
- Emergency control pad for pumping unit HPG 1808/1113IF
- Remote controlled electric vibrator placed on the concrete hopper grid
- Centralized lubrication system for pumping unit
- Automatic oil lubrication system for pumping pistons on HPG 1808/1113 IF
- Additional manual lubrication system for pumping unit
- Hard plastic outrigger support plates with relative housing
- Rear light on hopper and stabilization area
- Level readers for stabilization control
- Accessories for cleaning and pipe washing
- Double thickness concrete pipes, in high resistant steel CIFA Long Life Pipes
- Separated emergency engine kit for independent control of the hopper mixer, concrete pumping unit, boom and water pump
- Medium pressure water pump (50l/50bar)
- Aluminium hopper covering
- Centralized lubrication system for placing boom

Optionals

- High pressure water pump (28l/120bar)
- Air compressor for pipeline cleaning
- Air pipeline for placing boom

TRUCK-MOUNTED CONCRETE BOOM PUMP

Placing boom	B5RZ 52/48
Pumping unit	HPG 1808/1113 IF9 PA1506/909F8
Driven by	PTO
Chassis	4-5 axles

Pumping unit technical data

Model		PA 1506/909 F8	HPG 1808/1113 IF9
Max theoretical output	m ³ /h	150/90	179/105
Max. pressure on concrete	bar	53/95	76/130
Max. numbers of cycles per min.	nr.	30/17	36/21
Concrete cylinders (diam. x stroke)	mm	230x2000	230x2000
Concrete hopper capacity	l	550	650
Hydraulic circuit		open	closed

Placing boom technical data

Model		B5RZ 52/48
Pipeline diameter	mm	125
Max. vertical reach	m	51,1
Max. horizontal distance	m	46,8
Min. unfolding height		20,9
Section numbers		6
1st section opening angle		90°
2nd section opening angle		180°
3rd section opening angle		180°
4th section opening angle		254°
5th section opening angle		210°
6th section opening angle		90°
Rotating angle		370°
End hose length	m	3

Technical data and characteristics subject to modifications without notice