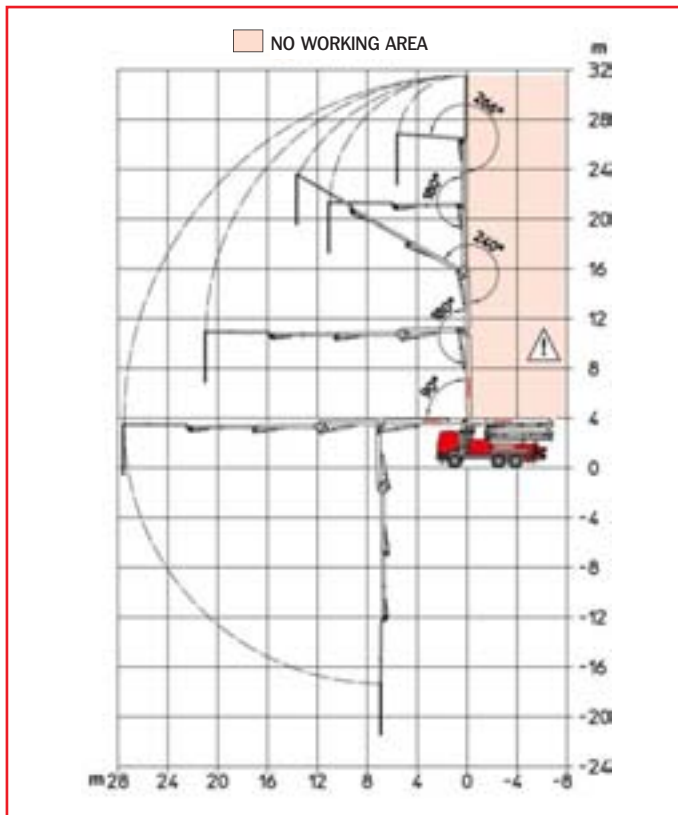
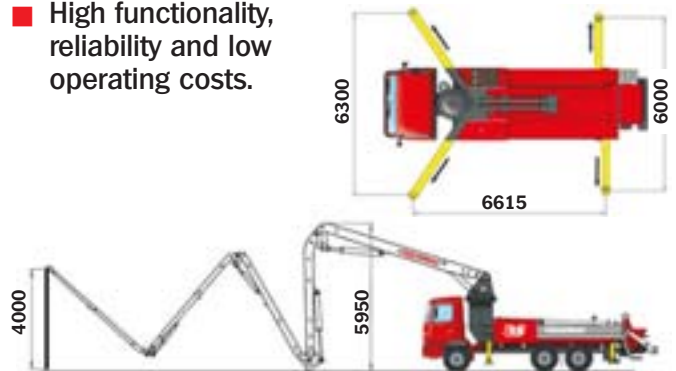


\* Variable dimension according to the chassis



## MAIN FEATURES

- Precision mounting on any standard 3 axle chassis.
- Boom is welded in box section with high tensile bush inserts.
- Integrated front and rear outriggers ensure the placing boom has a high degree of torsional rigidity.
- Pump is constructed using high-yield tensile strength steel, which is structurally checked at critical points using the Finite Elements Method (FEM).
- Compact structure, reduced weight.
- High functionality, reliability and low operating costs.



## PUMPING UNIT technical specifications

Model	SCL130A	SCL150AHP	SCL185A
Concrete output (MAX.) m <sup>3</sup> /h*	130	149	184
Concrete pressure bar*	61	76	61
Pumping cylinders (Ø x stroke) mm	230x2000		
Stroke volume	83,09 l		
Numbers of strokes per min.	27	30	37
Max oil pressure	350 bar		
Hopper capacity	600 l		
Output opening	178 mm		

\* Rod side feeding

## PLACING BOOM technical specifications

Max. height from ground	31,60 m
Max. horizontal reach	27,60 m
Max. downward reach	-21,5 m
Number of sections	5
Pipeline diameter	125 mm
Minimum height opening	5,95 m
Flexible terminal hose	4 m
Turret rotation angle	370°
1 <sup>st</sup> , 2 <sup>nd</sup> , 3 <sup>rd</sup> , 4 <sup>th</sup> and 5 <sup>th</sup> section opening angles	90° - 180° 240° - 180° - 260°
Opening system	"Multi Z"
Front outriggers	Telescopic diagonal spread
Rear outriggers	Lateral sliding
Front opening	6,30 m
Rear opening	6,0 m
Max pressure in circuit	380 bar

## MAIN FEATURES

### SCL CONCRETE PUMP

- System with 2 alternate cylinders and exchange valve.
- Concrete "S" valve made from anti-wear fusion material of different thickness, integrated command shaft and ribbed profile because of lever command.
- Pumping unit has an automatic lubrication system fitted on high usage points.
- Automatic wear compensation system between the wear plate and the cutting ring increases wear resistance and maximum pumping capacity.
- Chrome-lined concrete cylinders to ensure high resistance.
- Concrete hopper made from antiwear steel and designed in an optimal shape to avoid concrete stagnating.
- Engine speed and pumping volume automatically adjust according to slump of concrete, speed of delivery and distance of delivery.
- Radio remote controls the placing boom and the output of concrete – with emergency stop/start button.
- Large capacity concrete hopper made from anti-wear steel and mixer shaft with screwed blades in anti-wear steel.
- Field of use: concrete pumping until 1'(K1) slump and max 50mm size (with Ø 5" pipeline).

### PLACING BOOM

- 5 section "Z" fold placing boom, constructed from lightweight elastic steel. The boom is especially designed for maximum versatility and is ideal for placing high concrete output with great flexibility; pipeline Ø 125 mm (5")
- Hinge points made with double support pin and "Long Life" lubrication.
- Hydraulic cylinders have an easy to disassemble cylinder head to make changing the piston heads simple.
- Overcentre valves are fixed directly onto the oil inlet to allow soft operation and great reliability.
- Boom control with proportional distributor to ensure smooth operation.
- Boom rotation is controlled via a limit safety switch with a hydraulic brake system.
- Hydraulically operated outriggers with front 'X' opening and rear lateral sliding – with separate operation controls on either side of the machine.
- All controls are made to conform with 98/37/CE and UNI EN12001 in accordance with health and safety guidelines.

### ASSEMBLY on vehicle

<b>3-Axles chassis with short cab</b>	Wheelbase 3.600/4.200mm
<b>Total mass on ground</b>	Ton. 26

## STANDARD EQUIPMENT

- |   |  |
|---|--|
| <ul style="list-style-type: none"> <li>■ Proportional radio remote control provided with double speed in boom moving, automatic free frequency research, manipulators with 8 positions and delivery capacity converter.</li> <li>■ Proportional emergency remote control and serial cable.</li> <li>■ Hydraulic pumps with variable displacement and constant capacity adjuster.</li> <li>■ Boom hydraulic pump with fixed displacement.</li> <li>■ Gear hydraulic pumps for service purpose.</li> <li>■ Safety block-out at the opening of tank outlet hatch and hopper grid.</li> <li>■ Gauges and mini flexibles set to supervise the pressure.</li> <li>■ Membrane or lobe water pump 75 l/1', 30 bar.</li> </ul> | <ul style="list-style-type: none"> <li>■ Electric vibrator on hopper grid and push-button control panel at distance.</li> <li>■ Water tank capacity 980 l.</li> <li>■ Heat exchanger with hydraulically controlled fan.</li> <li>■ Nr. 1 light projector.</li> <li>■ Basket for accessories on the hopper side.</li> <li>■ Pipe holder.</li> <li>■ Plates for outrigger support and housing with safety lock.</li> <li>■ Switchboard completely protected on the right side.</li> <li>■ Small ladder that reaches the footboard to enable inspection and maintenance.</li> <li>■ Tool kit for cleaning and maintenance.</li> </ul> |
|---|--|

## ACCESSORIES ON REQUEST

- |   |   |
|---|---|
| <ul style="list-style-type: none"> <li>■ Concrete double wall pipeline with tempered core.</li> <li>■ Additional light projector on hopper.</li> <li>■ Pipeline kit for pumping on the ground.</li> <li>■ Multi-level water pump.</li> <li>■ Automatic release of terminal hose.</li> </ul> | <ul style="list-style-type: none"> <li>■ High pressure water pump with fan-shaped hose nozzle.</li> <li>■ Atomizer 16 litres, 8 bar.</li> <li>■ Compressor for pipeline cleaning.</li> <li>■ Aluminium cover for hopper.</li> <li>■ High pressure kit.</li> </ul> |
|---|---|



**SERMAC S.p.A.**  
Via Como, 3  
20054 Nova Milanese (MI), Italy  
Phone +39 0362 364320  
Fax +39 0362 364598  
www.sermacspa.com  
sermac@sermacspa.com



REPRESENTED BY: